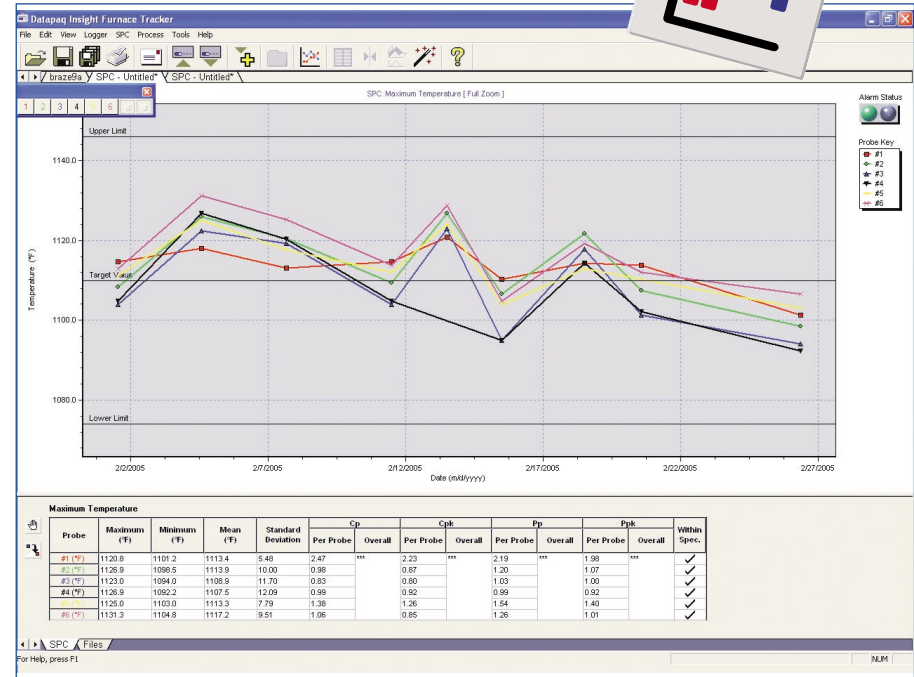
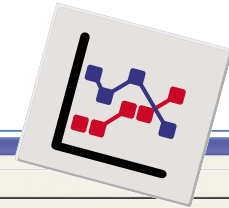


DATAPAQ  
DATAPAQ  
DATAPAQ  
DATAPAQ

# insight SPC Software™

Furnace Tracker Insight Software™ Version 3.0 now features

## Integrated Statistical Process Control



## Confirm that your process is in control

Datapaq's new Insight Software™ Version 3.0 with SPC easily and accurately confirms process control over weeks, months, or even years

- ▶ No need to manually export data from one software program to another or write your own spread sheets - with Insight Version 3.0, you can easily apply SPC to your furnace profile data.
- ▶ View historical data from clear SPC charts.
- ▶ Display the variation in key process parameters collected from individual profile runs (peak temperature or time at temperature).
- ▶ Immediately identify when your process goes out of tolerance.
- ▶ Predict future process failures by watching for gradual changes.
- ▶ Prevent problems before they occur, saving time and money while keeping productivity high.
- ▶ Perform statistical calculations against customer selected USL and LSL.



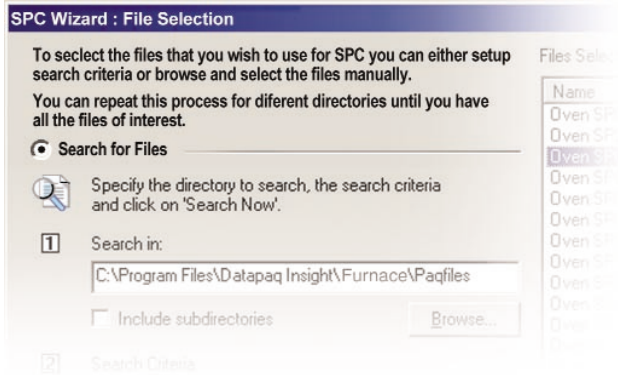
DATAPAQ

# insight SPC Wizards software



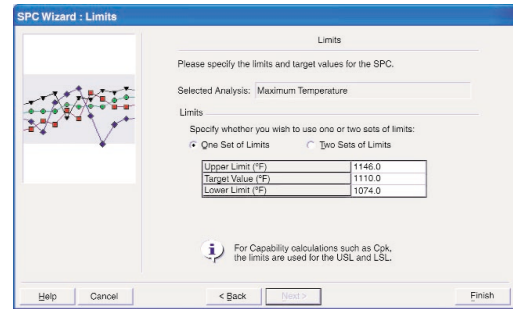
An easy to use and quick SPC wizard takes you step by step through the whole file search, analysis, limits set-up and reporting operations.

## Step 1 Select profiles to be included in SPC



- ▶ Locate the archive folder.
  - ▶ Select files, either by date or over a time period.
- Or, hand pick files using the browse function. Delete unwanted files using remove buttons.

## Step 2 Setup analysis parameters and SPC limits

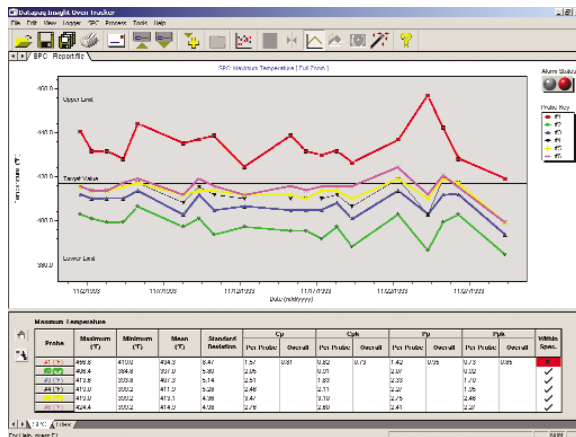


Select the analysis function used in the SPC operation (e.g., Datapaq Value) then input the analysis parameters for that analysis. The analysis function is applied to each profile in the SPC list and reported on the SPC chart.

- ▶ Max temperature
- ▶ Peak difference
- ▶ Rise time
- ▶ Time at temperature
- ▶ Max slope

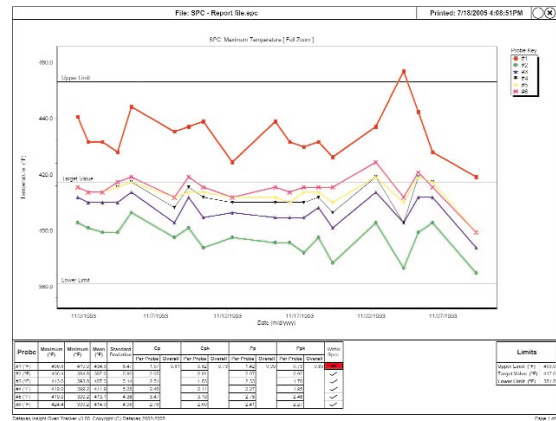
Select the USL, LSL and target value against which the results data is displayed graphically and from which the SPC calculations are performed.

## Step 3 Display SPC chart and SPC data



- ▶ Display SPC graphically against limits and identify any data out of tolerance. Record critical SPC calculations such as mean, standard deviation, Cp, Cpk, Pp, and Ppk. Analysis is performed on probe or profile basis.
- ▶ Select the file list to view files employed. Delete files directly from SPC chart if necessary.
- ▶ Save the SPC file (.spc file extension). New analysis can be added to this file over time.

## Step 4 Document and share SPC information



- ▶ Print a custom SPC report providing both graphical and numerical SPC data and a listing of files making up the report.
- ▶ Export data or SPC chart to other Windows applications for custom report writing or other data manipulation.
- ▶ E-mail the SPC file directly to others using the same Insight Software™.



North and South America  
 DATAPAQ Inc.  
 187 Ballardvale Street  
 Wilmington, MA 01887  
 Tel: 1(978) 988-3000  
 Fax: 1(978) 988-0666  
 e-mail: furnace@datapaq.com

Europe and Asia  
 DATAPAQ Limited  
 Deanland House, 160 Cowley Road,  
 Cambridge CB4 0GU, UK  
 Tel: +44 (0)1223 423 141  
 Fax: +44 (0)1223 423 306  
 e-mail: sales@datapaq.co.uk